

ST. MARY'S ROAD, EALING



£1,350 PER MONTH

Situated in this exceptionally desirable & most convenient of locations, Tuffin & Wren are privileged to offer this large purpose-built maisonette set over the ground floor of a period building. Boasting direct access to its own private rear garden, the property also features; 2 reception rooms, 2 good sized bedrooms, a fitted kitchen, white bathroom suite & a separate WC. Other benefits include the many original features and period detailing that remain and immediate availability!

TUFFIN & WREN

Independent Estate Agents

Front Reception Room (used as a bedroom)



Rear Reception Room



Kitchen



Bedroom 1



Own Rear Garden



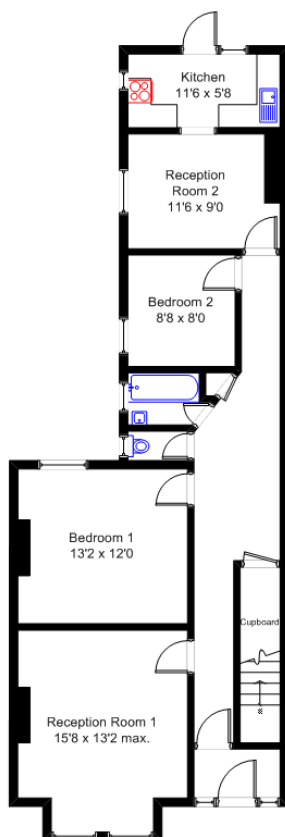
Further Information

For more details please call us on **020 8566 3366** or send an email to rent@tuffin-wren.co.uk.

Please note it is not our company policy to test services, heating systems and domestic appliances, therefore we cannot verify that they are in working order. Prospective purchasers are advised to obtain verification from their solicitors and/or surveyors.

TUFFIN & WREN

Independent Estate Agents



Ground Floor

St Mary's Road, Ealing W5

N.B. Not To Scale
(for illustration purposes only)

