

WESTVIEW CLOSE, HANWELL



£585,000

Tuffin & Wren are delighted to offer for sale a superb, 'link' detached family home tucked away in this quiet, yet very convenient cul-de-sac, overlooking the Brent Valley. The property has been refurbished by the present owners and now boasts smart, bright and very stylish accommodation that simply must be seen! Features include 3 bedrooms, generous living spaces and a wonderful, integrated kitchen/breakfast room. Other benefits include the stylish family bathroom, a delightful raised rear garden and handy off street parking to front.

TUFFIN & WREN

Independent Estate Agents

Stylish Integrated Kitchen



Open-Plan Living/Dining Spaces



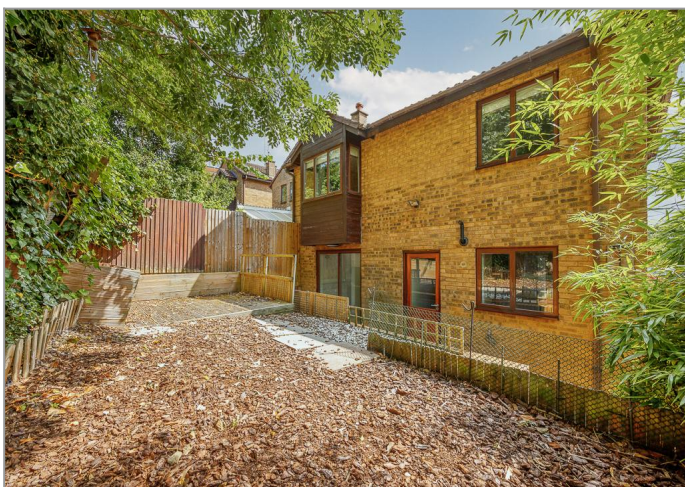
Principal Bedroom



Luxurious Family Bathroom



Delightful Rear Garden



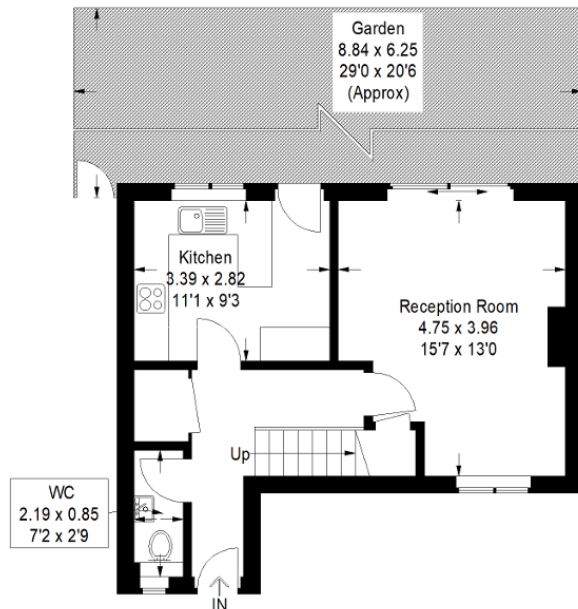
Further Information

For more details please call us on **020 8840 0993** or send an email to homes@tuffin-wren.co.uk.

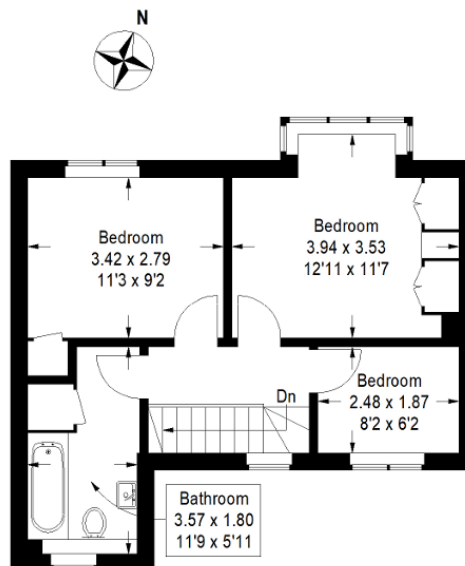
Please note it is not our company policy to test services, heating systems and domestic appliances, therefore we cannot verify that they are in working order. Prospective purchasers are advised to obtain verification from their solicitors and/or surveyors.

Westview

Approximate Gross Internal Area = 80.7 sq m / 869 sq ft



Ground Floor
40.1 sq m / 432 sq ft



First Floor
40.6 sq m / 437 sq ft

Illustration for identification purposes only, measurements are approximate, not to scale.
FloorplansUsketch.com © 2021 (ID790717)

