

RIDLEY AVENUE, EALING



£675,000

A charming and characterful Victorian cottage style terrace situated in this popular & convenient besides St Pauls in Northfields. The property features an extended, stylish and superbly presented interior that boasts three double bedrooms, two separate reception rooms and a stylish & contemporary fitted kitchen/breakfast room. Further benefits include the luxurious white bathroom with a separate shower enclosure, a further shower room & WC on the upper floor and a delightful Southerly facing 'Town' garden.

TUFFIN & WREN

Independent Estate Agents

Front Reception Room



Rear Reception Room



Stylish Kitchen/Diner



Principle Bedroom



Luxurious Bath & Shower Room



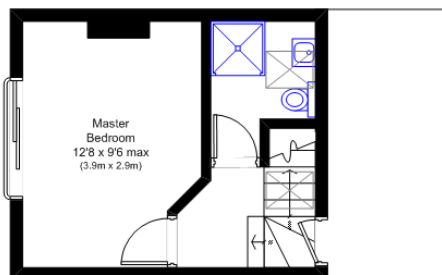
Further Information

For more details please call us on **020 8566 3366** or send an email to homes@tuffin-wren.co.uk.

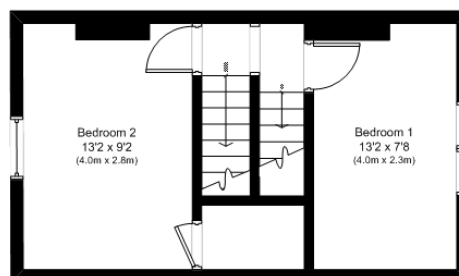
Please note it is not our company policy to test services, heating systems and domestic appliances, therefore we cannot verify that they are in working order. Prospective purchasers are advised to obtain verification from their solicitors and/or surveyors.

TUFFIN & WREN

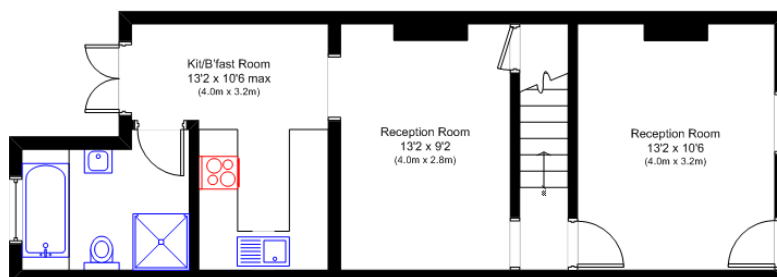
Independent Estate Agents



Second Floor



First Floor



Ground Floor

Ridley Avenue, Ealing W13

N.B. Not to Scale
(for illustration purposes only)

Energy Efficiency Rating		Current	Potential
Very energy efficient - lower running costs			
(92-100)	A		
(81-91)	B		
(69-80)	C		
(55-68)	D		
(39-54)	E		
(21-38)	F		
(1-20)	G		
Not energy efficient - higher running costs			
England & Wales		59	81
		EU Directive 2002/91/EC	

Environmental Impact (CO ₂) Rating		Current	Potential
Very environmentally friendly - lower CO ₂ emissions			
(92-100)	A		
(81-91)	B		
(69-80)	C		
(55-68)	D		
(39-54)	E		
(21-38)	F		
(1-20)	G		
Not environmentally friendly - higher CO ₂ emissions			
England & Wales		52	78
		EU Directive 2002/91/EC	