

GOLDEN MANOR, HANWELL



£699,950

This appealing, end terrace townhouse offers versatile, bright & spacious accommodation, arranged over its 3 floors. Accommodation briefly comprises: 3 or 4 double bedrooms, a large living room (a separate dining room if 3 bedrooms) and a stylish modern fitted kitchen/dining room. The property further benefits from a handy loft storage room, family bathroom, downstairs WC, Southerly facing walled rear garden and off street parking for many vehicles - in our opinion this property is not expected to remain on the market for long!

TUFFIN & WREN

Independent Estate Agents

Spacious Living Room



Stylish Kitchen/Dining Room



First Floor Bedroom



Southerly Facing Walled Garden



Second Floor Bedroom



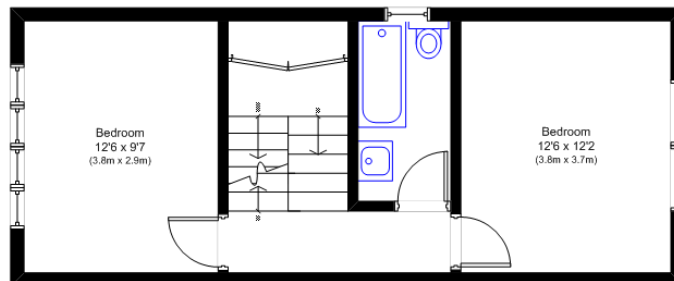
Further Information

For more details please call us on **020 8840 0993** or send an email to homes@tuffin-wren.co.uk.

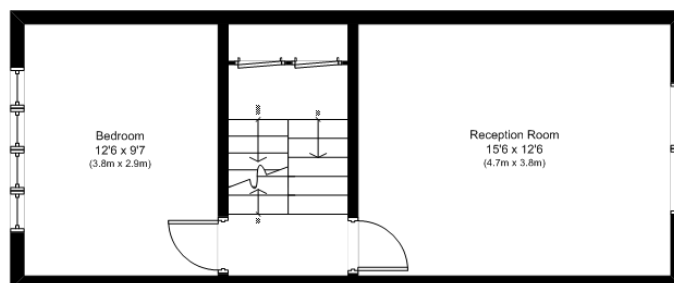
Please note it is not our company policy to test services, heating systems and domestic appliances, therefore we cannot verify that they are in working order. Prospective purchasers are advised to obtain verification from their solicitors and/or surveyors.

TUFFIN & WREN

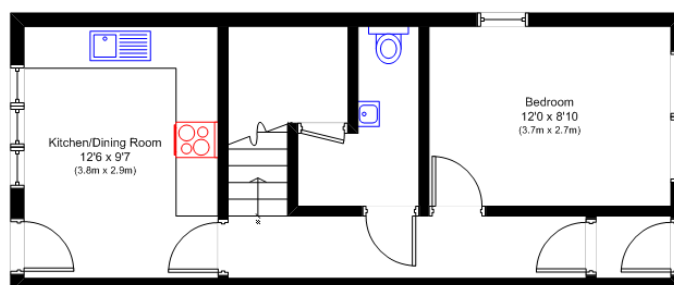
Independent Estate Agents



Second Floor



First Floor



Ground Floor



Golden Manor W7

N.B. Not to Scale
(for illustration purposes only)

Energy Efficiency Rating		Current	Potential
Very energy efficient - lower running costs			
(92-100) A			82
(81-91) B			
(69-80) C			
(55-68) D			
(39-54) E			
(21-38) F		64	
(1-20) G			
Not energy efficient - higher running costs			
England & Wales		EU Directive 2002/91/EC	

Environmental Impact (CO ₂) Rating		
	Current	Potential
Very environmentally friendly - lower CO ₂ emissions		
(92-100) A		77
(81-91) B		
(69-80) C		
(55-68) D		
(39-54) E		
(21-38) F		57
(1-20) G		
Not environmentally friendly - higher CO ₂ emissions		
England & Wales		
EU Directive 2002/91/EC		