

GROUND FLOOR FLAT, WINDERMERE ROAD, EALING

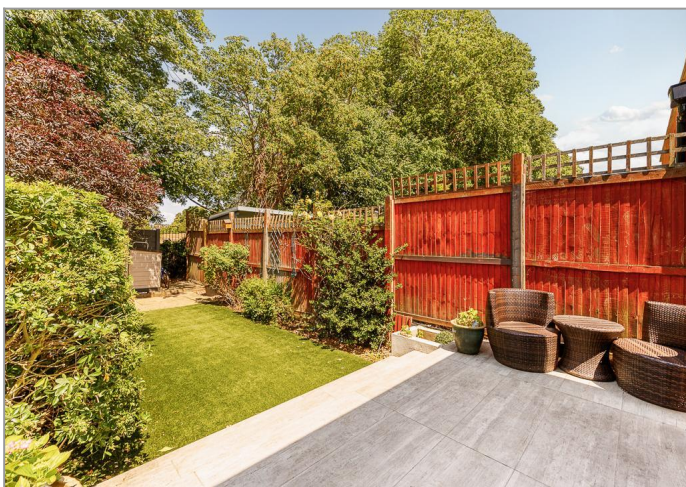
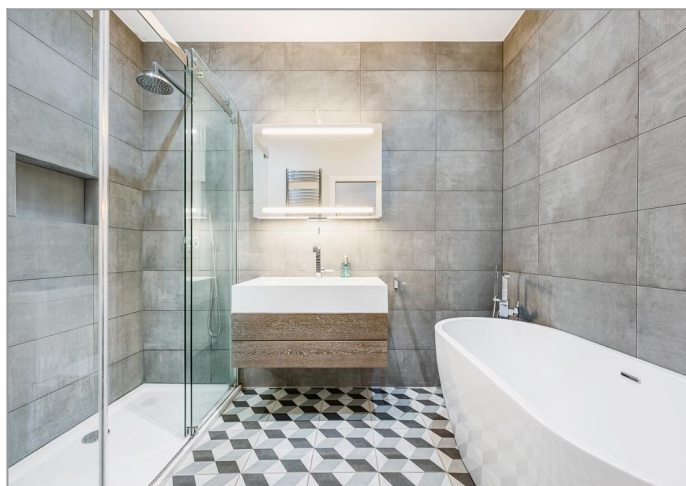


£599,950

A large, stylish and very modern conversion apartment set over the ground floor of this handsome Edwardian property, situated in the heart of Northfields just minutes from tubes, nearby shops and other amenities. Backing onto & with views across the lovely Lammas Park, the property boasts a bright and spacious interior that includes; 2 double bedrooms, a stylish integrated kitchen open-plan with the extended living spaces, direct access to a wonderful landscaped private rear garden and a stunning bath and shower room. The property is also offered for sale with a share in the freehold interest and no onward chain and so, early viewing is strongly strongly recommended to avoid disappointment!

TUFFIN & WREN

Independent Estate Agents



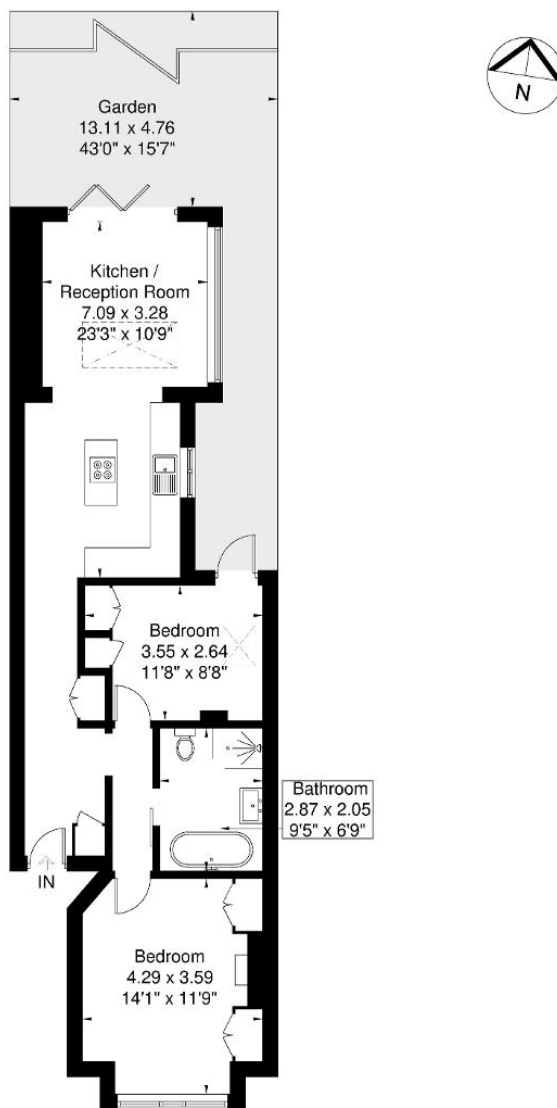
Further Information

For more details please call us on **020 8566 3366** or send an email to homes@tuffin-wren.co.uk.

Please note it is not our company policy to test services, heating systems and domestic appliances, therefore we cannot verify that they are in working order. Prospective purchasers are advised to obtain verification from their solicitors and/or surveyors.

Windermere Road

Approximate Gross Internal Area = 64.4 sq m / 693 sq ft



Ground Floor

Although every attempt has been made to ensure accuracy, all measurements are approximate.

The floorplan is for illustrative purposes only and not to scale.

© www.perspective.co.uk

Score	Energy rating	Current	Potential
92+	A		
81-91	B		
69-80	C		74 C
55-68	D		
39-54	E	51 E	
21-38	F		
1-20	G		