

FLAT 2, FRAMFIELD ROAD, HANWELL



£1,500 PER MONTH

Tuffin & Wren are privileged to offer this newly extended and recently refurbished 'split-level' apartment set over the upper floors of a very conveniently located period building. This unique 'lifestyle' property boasts exceptionally spacious, flexible living spaces that feature a large open-plan living/kitchen/dining room, study/3rd bedroom and a luxurious fully-tiled bathroom on the first floor, with 2 further bedrooms and stylish shower room on the upper level. This stunning duplex is not expected to remain available for very long!

TUFFIN & WREN

Independent Estate Agents

Open-Plan Living/Dining/Kitchen



Stylish Integrated Kitchen Area



Luxurious Bathroom



Master Bedroom



Stylish Shower Room



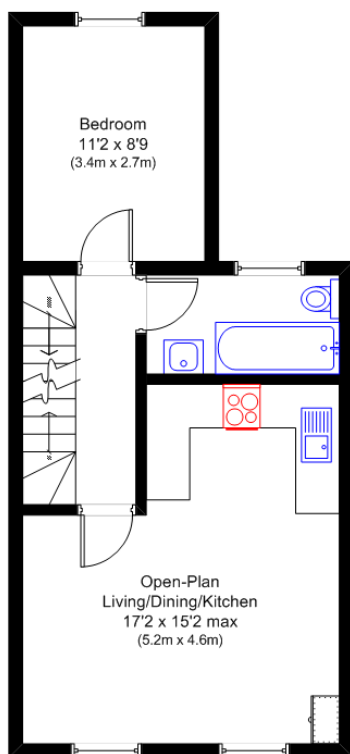
Further Information

For more details please call us on **020 8840 0993** or send an email to rent@tuffin-wren.co.uk.

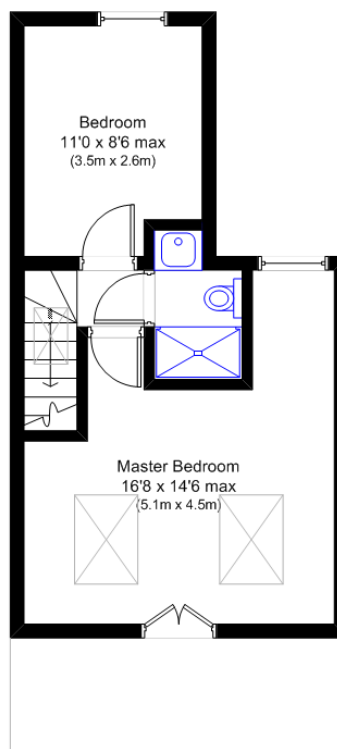
Please note it is not our company policy to test services, heating systems and domestic appliances, therefore we cannot verify that they are in working order. Prospective purchasers are advised to obtain verification from their solicitors and/or surveyors.

TUFFIN & WREN

Independent Estate Agents



First Floor



Second Floor

Framfield Road, Hanwell W7

Approx Gross Internal Area:
775 sq ft (72 sq m)

N.B. Not to Scale
(for illustration purposes only)

Energy Efficiency Rating		Current	Potential
Very energy efficient - lower running costs			
(92-100)	A	80	80
(81-91)	B		
(69-80)	C		
(55-68)	D		
(39-54)	E		
(21-38)	F		
(1-20)	G		
Not energy efficient - higher running costs			
England & Wales		EU Directive 2002/91/EC	

Environmental Impact (CO ₂) Rating		Current	Potential
Very environmentally friendly - lower CO ₂ emissions			
(92-100) A		82	82
(81-91) B			
(69-80) C			
(55-68) D			
(39-54) E			
(21-38) F			
(1-20) G			
Not environmentally friendly - higher CO ₂ emissions			
England & Wales		EU Directive 2002/91/EC	