

STUDLAND ROAD, HANWELL



£525,000

Tuffin & Wren are delighted to offer for sale this quite stunning, detached family home tucked away in a quiet, yet very convenient location. The property has been extensively remodelled and refurbished by the present owners and now boasts smart, bright and very stylish accommodation that simply must be seen! Features include 2 bedrooms, a separate reception room leading to generous open-plan living/kitchen/dining spaces with a wonderful, integrated kitchen/breakfast area. Other benefits include the stylish family bathroom, handy downstairs cloakroom/WC, a delightful landscaped rear garden and off street parking for 2 cars to the front.

TUFFIN & WREN

Independent Estate Agents

Unique Detached Property



Stylish Open-Plan Kitchen/Dining Spaces



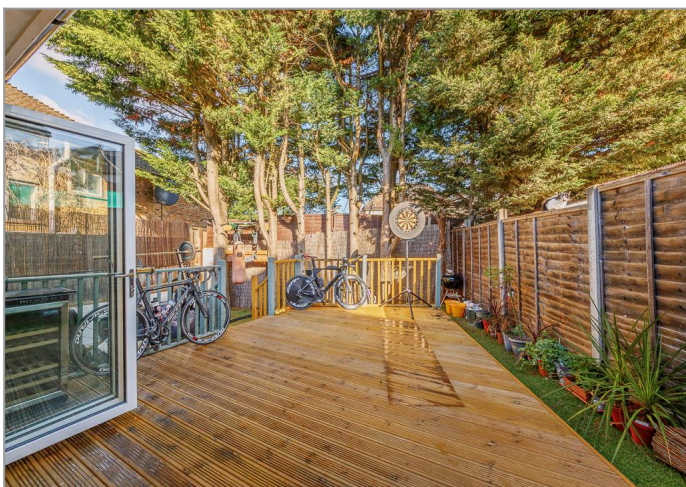
Front Reception Room



Open-Plan Living/Dining/Kitchen Spaces



Landscaped Rear Garden



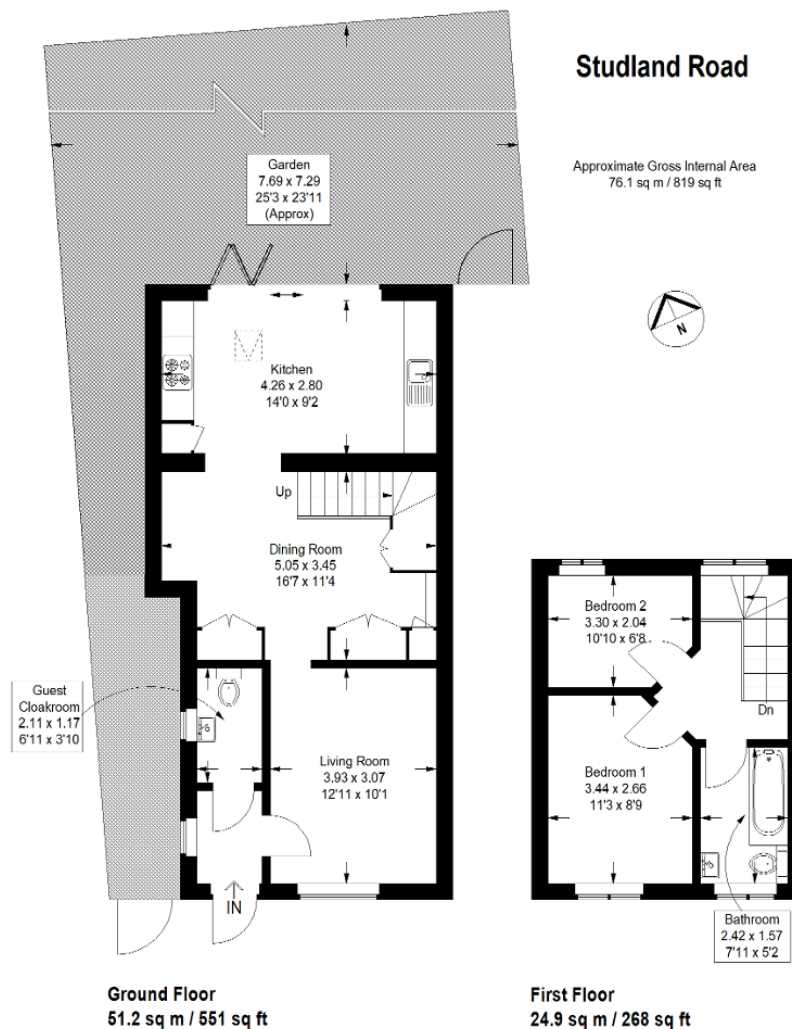
Further Information

For more details please call us on **020 8840 0993** or send an email to homes@tuffin-wren.co.uk.

Please note it is not our company policy to test services, heating systems and domestic appliances, therefore we cannot verify that they are in working order. Prospective purchasers are advised to obtain verification from their solicitors and/or surveyors.

TUFFIN & WREN

Independent Estate Agents



Energy Efficiency Rating

Score	Energy rating	Current	Potential
92+	A		
81-91	B		
69-80	C	77 C	78 C
55-68	D		
39-54	E		
21-38	F		
1-20	G		