

GREATDOWN ROAD, HANWELL



£535,000

Tuffin & Wren are delighted to offer for sale this appealing end terrace family home that now boasts light & spacious, contemporary styled & well-presented living accommodation situated in this popular & convenient location. Features include; 3 good-sized bedrooms, separate reception room, a stylish kitchen/breakfast room that's open to the conservatory/dining room extension. Other benefits include the superb, modern family bathroom, a wonderfully secluded and generous rear garden and the handy off street parking for numerous vehicles.

TUFFIN & WREN

Independent Estate Agents

Reception Room



Kitchen Detail



Conservatory/Dining Room



Delightful Rear Garden



Further Information

For more details please call us on **020 8840 0993** or send an email to homes@tuffin-wren.co.uk.

Please note it is not our company policy to test services, heating systems and domestic appliances, therefore we cannot verify that they are in working order. Prospective purchasers are advised to obtain verification from their solicitors and/or surveyors.

Greatdown Road

Approximate Gross Internal Area = 86.8 sq m / 934 sq ft

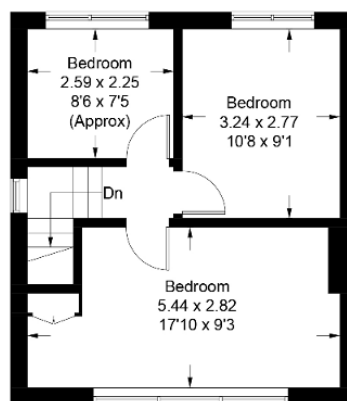
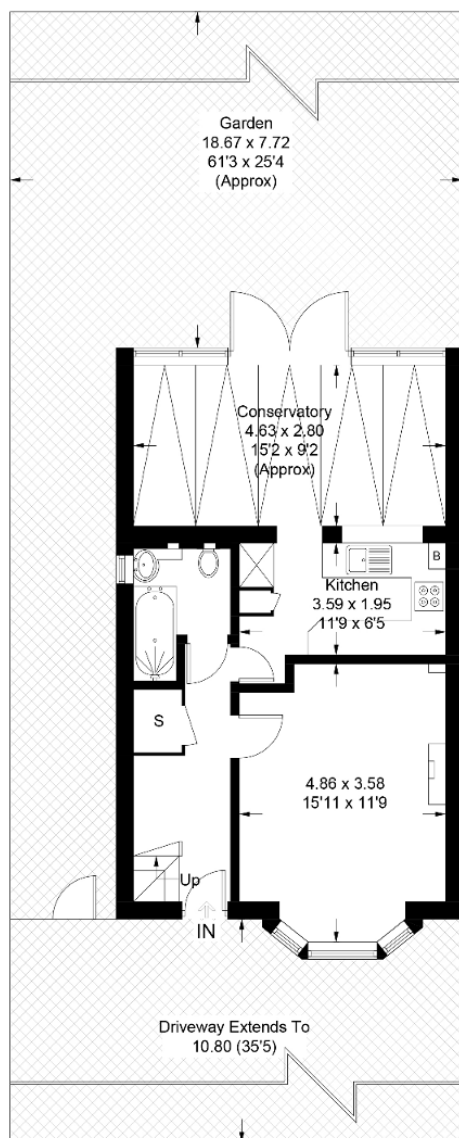


Illustration for identification purposes only,
measurements are approximate, not to scale. (ID688843)

