

HIGH TREES COURT, MANOR COURT ROAD, HANWELL



£365,000

Tuffin & Wren are delighted to offer this most impressive, purpose-built apartment set on the upper floor of a superbly located building in the highly sought after 'Golden Manor' enclave. The spacious, light-filled interior features two double bedrooms, generous open-plan living/dining/kitchen spaces with ample built-in storage. Other benefits include the modern, fitted kitchen/breakfast area, a superb fully-tiled bathroom, well-maintained communal gardens & grounds and the very handy gated off street parking & garage at the rear of the premises.

TUFFIN & WREN

Independent Estate Agents

Open-Plan Living Spaces



Modern Fitted Kitchen/Breakfast Area



Superb Fully-Tiled Bathroom



Well Maintained Communal Gardens



Garage in Nearby Block



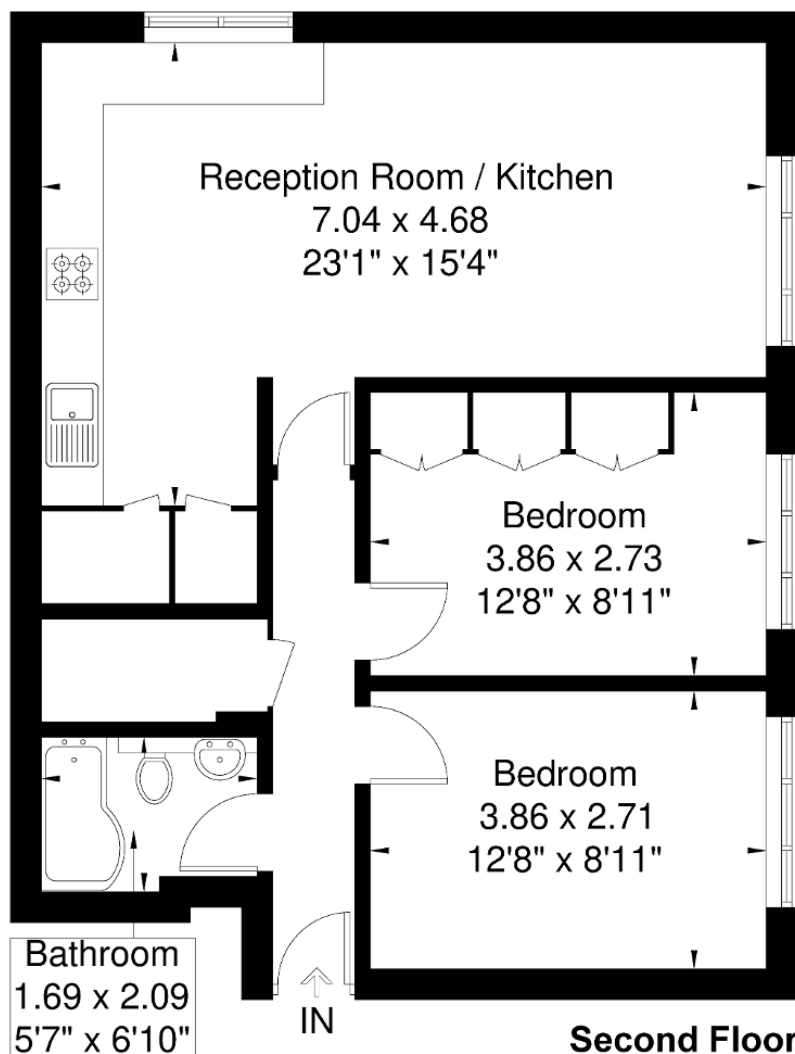
Further Information

For more details please call us on **020 8840 0993** or send an email to homes@tuffin-wren.co.uk.

Please note it is not our company policy to test services, heating systems and domestic appliances, therefore we cannot verify that they are in working order. Prospective purchasers are advised to obtain verification from their solicitors and/or surveyors.

High Trees Court

Approximate Gross Internal Area = 61.6 sq m / 663 sq ft



Although every attempt has been made to ensure accuracy, all measurements are approximate.

The floorplan is for illustrative purposes only and not to scale.

© www.perspective.co.uk

Energy Efficiency Rating			
Score	Energy rating	Current	Potential
92+	A		
81-91	B		
69-80	C		79 C
55-68	D	64 D	
39-54	E		
21-38	F		
1-20	G		