

LEVETT HOUSE, DENMAN AVENUE, SOUTHALL



£425,000

Tuffin & Wren are delighted to offer for sale a most luxurious purpose-built apartment, situated within the exclusive St Bernards Gate development. This exceptional home boasts superbly designed, contemporary living spaces with quality fittings & finishes used throughout. Features include a bright and spacious, open-plan living/dining/kitchen room complete with stunning, integrated fitted kitchen area and a delightful, westerly facing balcony/terrace. Other benefits include the 2 double bedrooms (with en-suite shower room and built-in wardrobes to the principal room), a luxuriously appointed bathroom, beautifully maintained communal grounds and gardens, bike store, a lift and handy parking space.

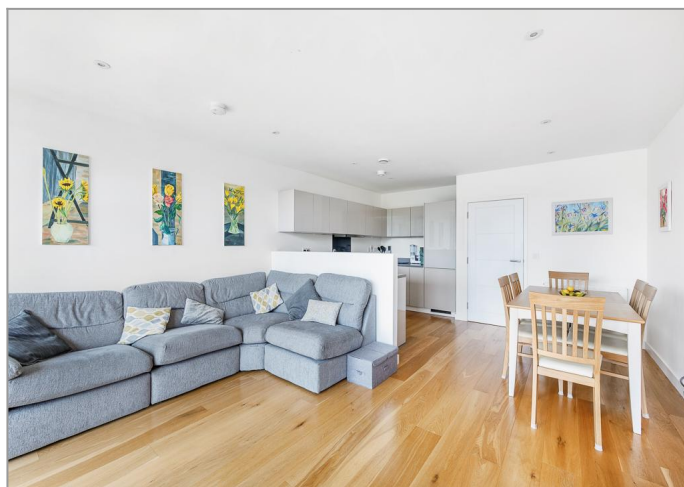
TUFFIN & WREN

Independent Estate Agents

Stylish Open-Plan Living



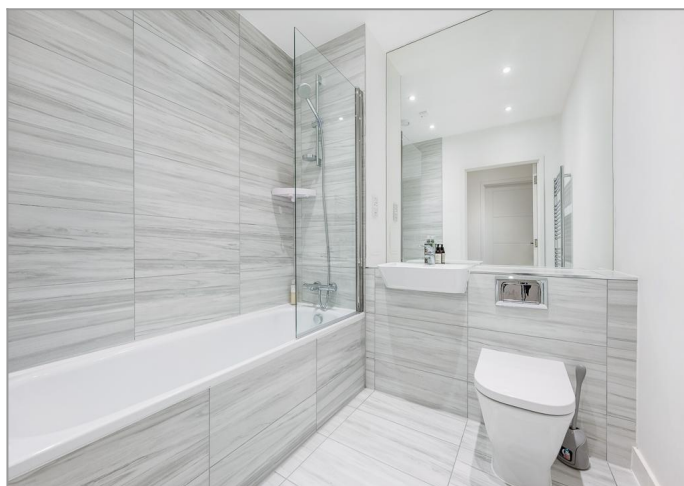
Open-Plan Living/Dining/Kitchen Spaces



Stunning, Integrated Kitchen Area



Luxuriously Appointed Bathroom



Westerly-Facing Balcony/Terrace



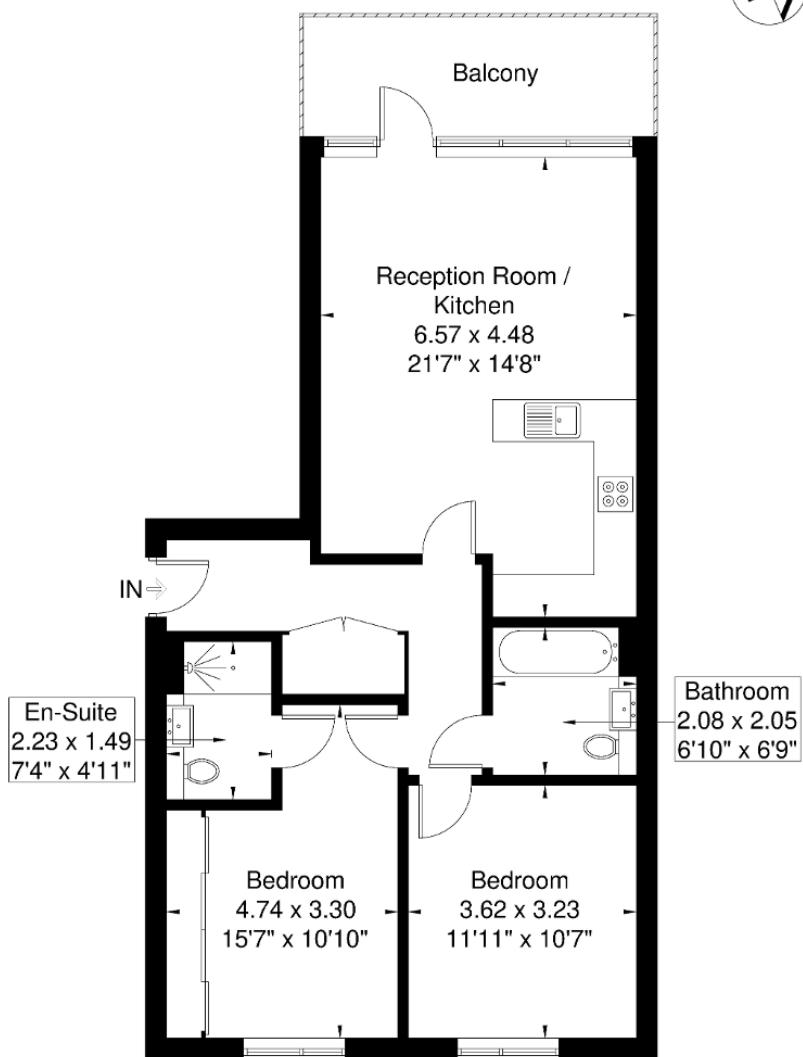
Further Information

For more details please call us on **020 8840 0993** or send an email to homes@tuffin-wren.co.uk.

Please note it is not our company policy to test services, heating systems and domestic appliances, therefore we cannot verify that they are in working order. Prospective purchasers are advised to obtain verification from their solicitors and/or surveyors.

Levett House

Approximate Gross Internal Area = 72.1 sq m / 776 sq ft



Third Floor

Although every attempt has been made to ensure accuracy, all measurements are approximate.

The floorplan is for illustrative purposes only and not to scale.

© www.perspective.co.uk

Energy Efficiency Rating			
Score	Energy rating	Current	Potential
92+	A		
81-91	B	88 B	88 B
69-80	C		
55-68	D		
39-54	E		
21-38	F		
1-20	G		