

THE HEATH, LOWER BOSTON ROAD, HANWELL



£349,950

Set back in this little known 'close', just moments from Hanwell's many amenities and green spaces, Tuffin & Wren are delighted to offer for sale a most bright and spacious, purpose-built maisonette. Boasting generous ground floor accommodation, the property features 2 good-sized bedrooms, a large reception room and a fitted kitchen. Other benefits include a bathroom, ample built-in storage, direct access to it's own private rear garden and is offered for sale with no onward chain!

TUFFIN & WREN

Independent Estate Agents

Generous Reception Room



Kitchen



Principal Bedroom



Bathroom



Own Private Rear Garden



Further Information

For more details please call us on **020 8840 0993** or send an email to homes@tuffin-wren.co.uk.

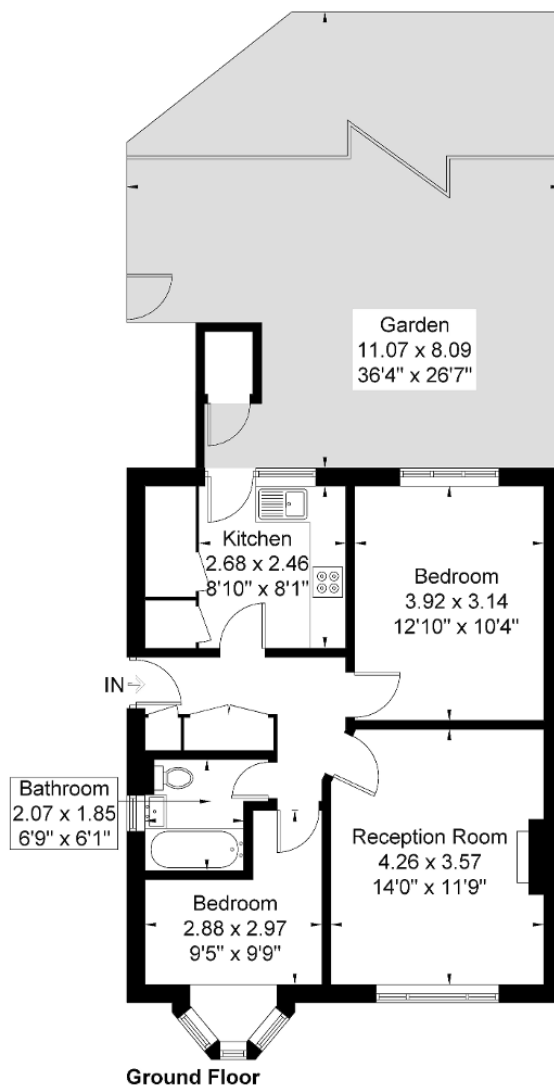
Please note it is not our company policy to test services, heating systems and domestic appliances, therefore we cannot verify that they are in working order. Prospective purchasers are advised to obtain verification from their solicitors and/or surveyors.

The Heath, Lower Boston Road

Approximate Gross Internal Area = 56.2 sq m / 604 sq ft

Outbuilding = 0.8 sq m / 8 sq ft

Total = 57 sq m / 612 sq ft



Although every attempt has been made to ensure accuracy, all measurements are approximate.
The floorplan is for illustrative purposes only and not to scale.

© www.prerspective.co.uk

Energy Efficiency Rating			
Score	Energy rating	Current	Potential
92+	A		
81-91	B		
69-80	C		76 C
55-68	D	60 D	
39-54	E		
21-38	F		
1-20	G		