

CHESHAM TERRACE, EALING



£685,000

Situated in this desirable location just minutes from shops, restaurants, parks, schools and train stations, Tuffin & Wren are privileged to offer this handsome Edwardian terrace property for sale. Sympathetically refurbished and redecorated, the property boasts light and spacious, contemporary styled living accommodation that features; a stylish, extended fitted kitchen, two double bedrooms and two separate reception rooms. Other benefits include the modern first floor bathroom, a sunny southerly facing rear garden and no onward chain.

TUFFIN & WREN

Independent Estate Agents



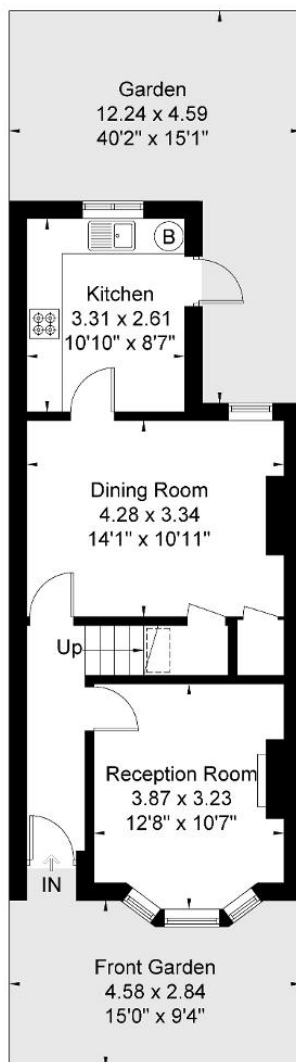
Further Information

For more details please call us on **020 8566 3366** or send an email to homes@tuffin-wren.co.uk.

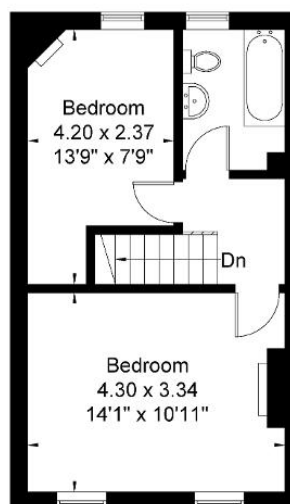
Please note it is not our company policy to test services, heating systems and domestic appliances, therefore we cannot verify that they are in working order. Prospective purchasers are advised to obtain verification from their solicitors and/or surveyors.

Chesham Terrace

Approximate Gross Internal Area = 78.8 sq m / 847 sq ft



Ground Floor
44.2 sq m / 475 sq ft



First Floor
34.6 sq m / 372 sq ft

Although every attempt has been made to ensure accuracy, all measurements are approximate.
The floorplan is for illustrative purposes only and not to scale.
© www.perspective.co.uk

Energy Efficiency Rating			
Score	Energy rating	Current	Potential
92+	A		
81-91	B		87 B
69-80	C		
55-68	D	63 D	
39-54	E		
21-38	F		
1-20	G		