

SHAKESPEARE ROAD, HANWELL



£1,575,000

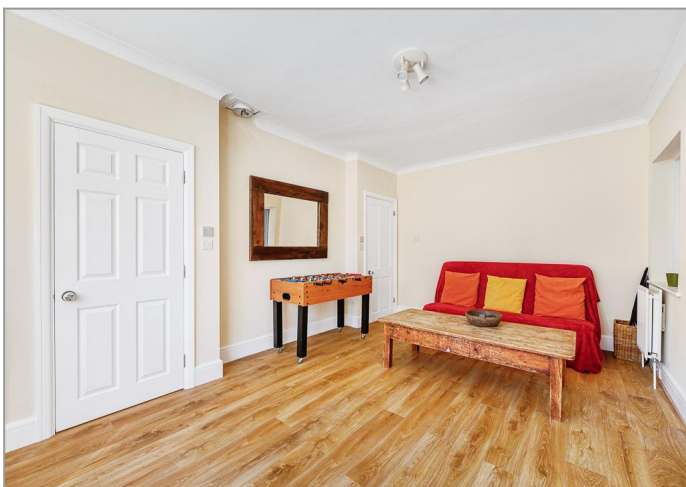
Tuffin & Wren are privileged to offer for sale this exceptional, detached residence boasting over 2000 sqft of sympathetically remodelled, refurbished and beautifully-presented living spaces that simply must be seen! Situated in this premier Hanwell location, the property features contemporary open-plan living and dining spaces together with a stunning, integrated kitchen area that's perfect for larger families & entertaining. Skilfully extended above, the property now boasts a principal suite of considerable proportions, with large en-suite shower room and 'Juliette' balcony. Other benefits include the large, separate reception room, handy utility/laundry room, 4 first-floor double bedrooms (the guest bedroom has an en-suite shower room too) and a luxuriously appointed family bath and shower room. There's also a downstairs shower room, a generous and delightfully secluded rear garden with side access, as well as off street parking to the front. Worth noting is the property is also being sold with the benefit of no onward chain!

TUFFIN & WREN

Independent Estate Agents

TUFFIN & WREN

Independent Estate Agents



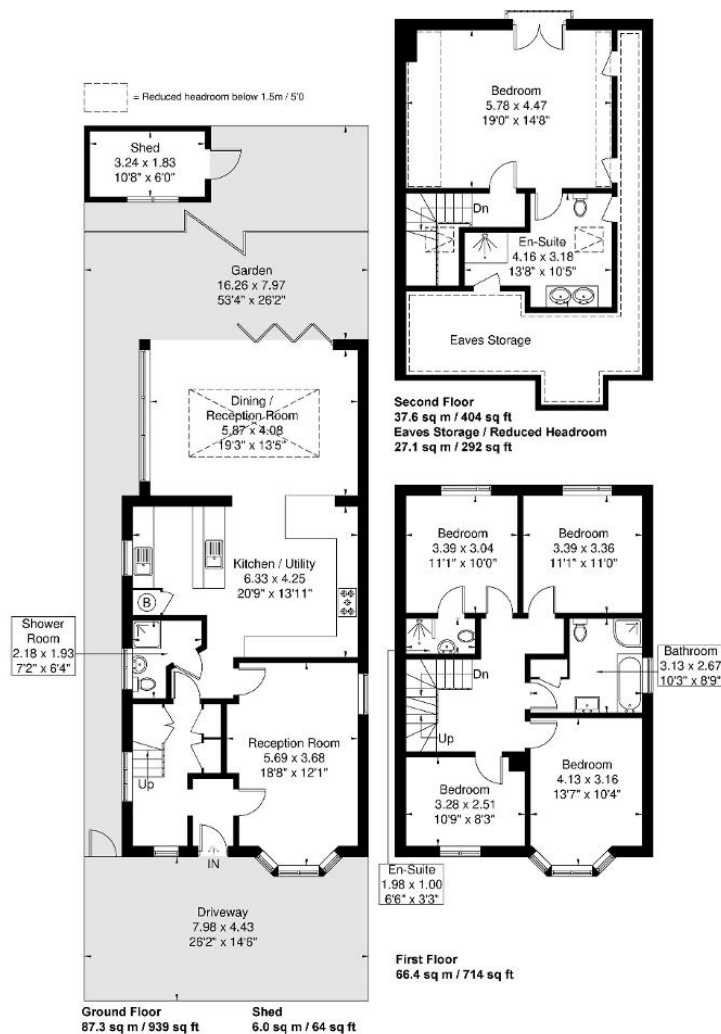
Further Information

For more details please call us on **020 8840 0993** or send an email to homes@tuffin-wren.co.uk.

Please note it is not our company policy to test services, heating systems and domestic appliances, therefore we cannot verify that they are in working order. Prospective purchasers are advised to obtain verification from their solicitors and/or surveyors.

Shakespeare Road

Approximate Gross Internal Area = 191.3 sq m / 2057 sq ft
 Eaves Storage / Reduced Headroom = 27.1 sq m / 292 sq ft
 Shed = 6.0 sq m / 64 sq ft
 Total = 224.4 sq m / 2413 sq ft



Although every attempt has been made to ensure accuracy, all measurements are approximate.
 The floorplan is for illustrative purposes only and not to scale.
 © www.perspective.co.uk

Score	Energy rating	Current	Potential
92+	A		
81-91	B		84 B
69-80	C	79 C	
55-68	D		
39-54	E		
21-38	F		
1-20	G		