

DEVONSHIRE ROAD, EALING

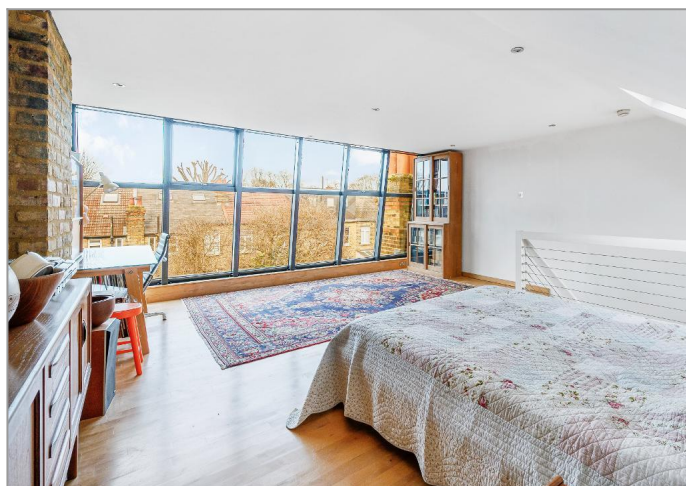


£999,950

Tuffin & Wren invite you to step into the charm of this exceptional Edwardian property, situated just a stone's throw away from picturesque Lammas Park, in the very heart of Northfields. Featuring a wealth of original features, period detailing and contemporary interventions, the result is a harmonious collection of elegant interior spaces, that simply must be seen. First and foremost is the c400 sqft principal bedroom/studio, there are two additional double bedrooms, two separate reception rooms and an interconnecting fitted kitchen too. There's also a wonderful period bathroom, handy office/study space and a delightful (north-)westerly facing rear garden. Do not miss the opportunity to view these impressive spaces - book a viewing today and make this period gem your own!

TUFFIN & WREN

Independent Estate Agents



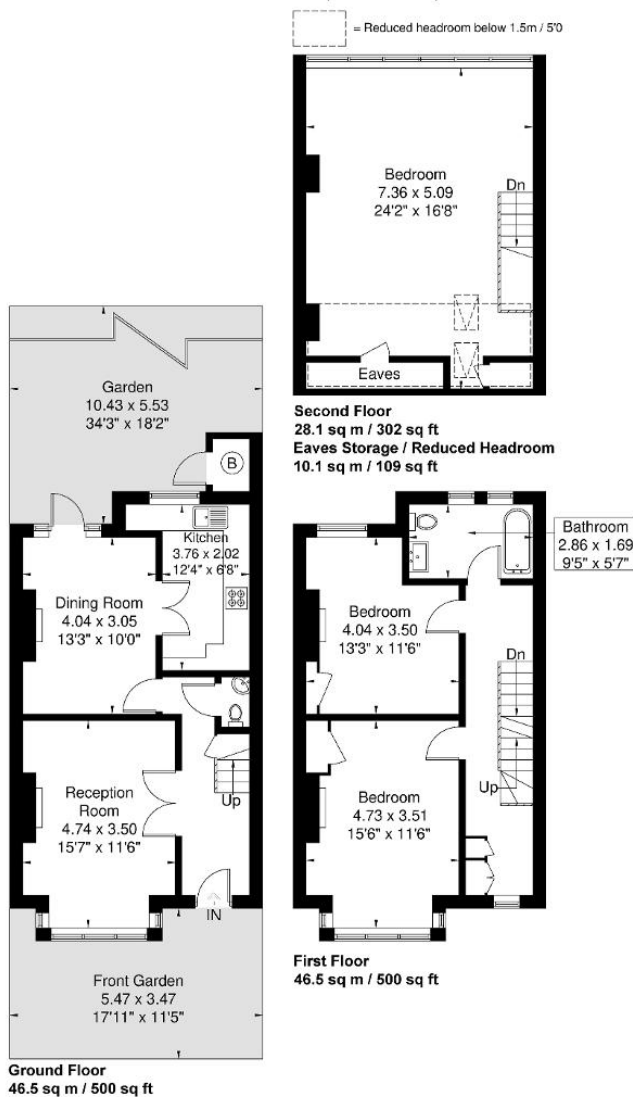
Further Information

For more details please call us on **020 8566 3366** or send an email to homes@tuffin-wren.co.uk.

Please note it is not our company policy to test services, heating systems and domestic appliances, therefore we cannot verify that they are in working order. Prospective purchasers are advised to obtain verification from their solicitors and/or surveyors.

Devonshire Road

Approximate Gross Internal Area = 121.1 sq m / 1303 sq ft
Eaves Storage / Reduced Headroom = 10.1 sq m / 109 sq ft
Total = 131.2 sq m / 1412 sq ft



Although every attempt has been made to ensure accuracy, all measurements are approximate.
The floorplan is for illustrative purposes only and not to scale.
© www.perspective.co.uk

| Score | Energy rating | Current | Potential |
|-------|---------------|---------|-----------|
| 92+ | A | | |
| 81-91 | B | | 83 B |
| 69-80 | C | | |
| 55-68 | D | 61 D | |
| 39-54 | E | | |
| 21-38 | F | | |
| 1-20 | G | | |