

WYNDHAM ROAD, EALING

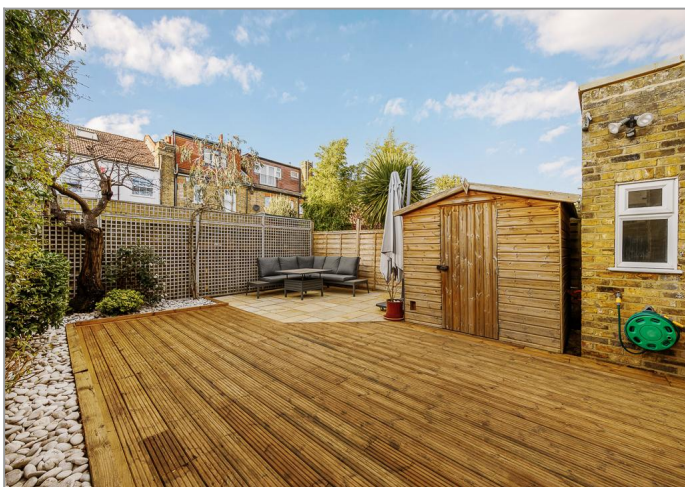
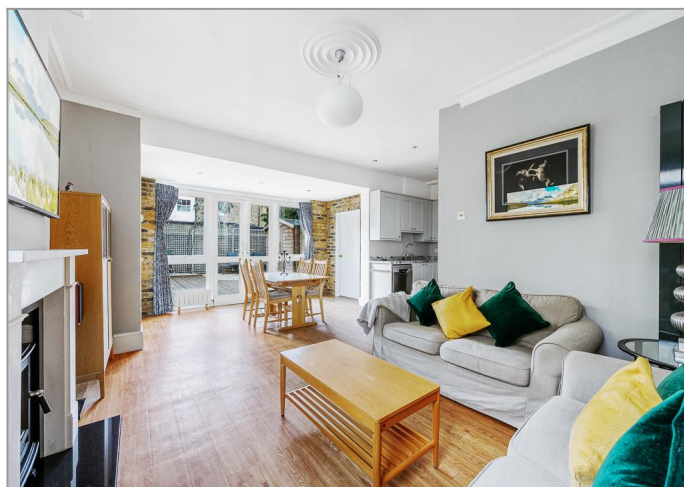


£1,295,000

Perfectly positioned on this prime residential road in Northfields, Tuffin & Wren are privileged to offer a most impressive, Edwardian end terrace family home for sale. Set over a wider plot and extended across the rear and into the loft space, the current owners have then extensively refurbished the property resulting in nearly 2000 sqft of beautifully calm, contemporary interiors filled with natural light and styled with quality fittings & finishes throughout. The stunning interior is also perfectly complemented by the many original features and period detailing that remain, as well as the wonderful outside spaces where a generous, westerly facing landscaped rear garden is perfect for entertaining and there's a 'sun-trap' patio and handy side access too. You will rarely find a home that has been so cleverly designed and perfectly finished and it truly must be seen, to be fully appreciated!

TUFFIN & WREN

Independent Estate Agents



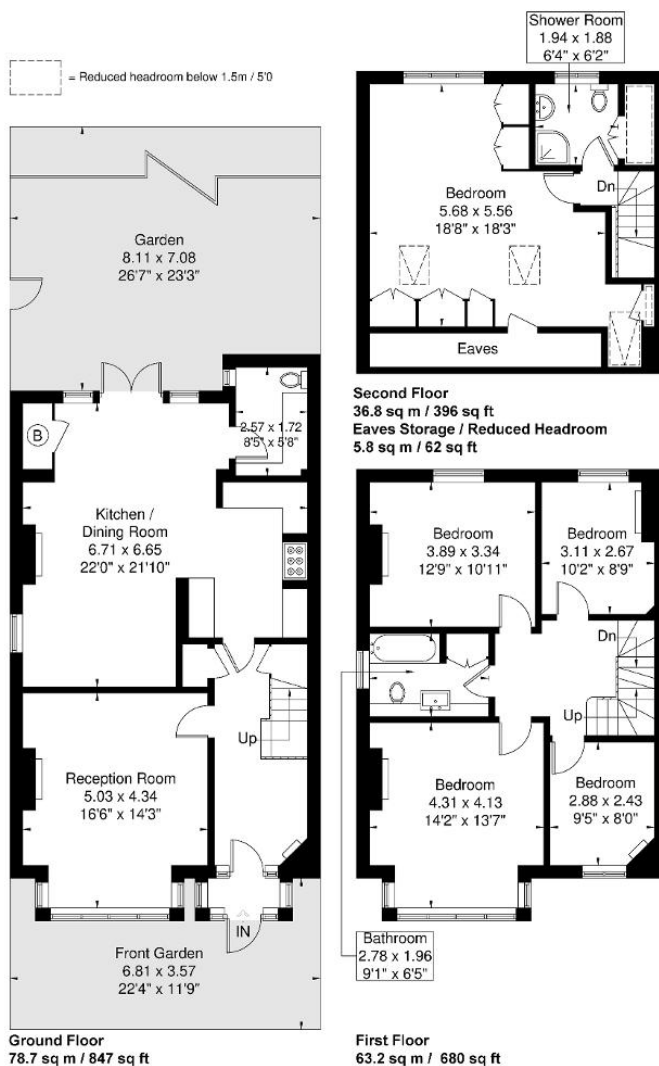
Further Information

For more details please call us on **020 8566 3366** or send an email to homes@tuffin-wren.co.uk.

Please note it is not our company policy to test services, heating systems and domestic appliances, therefore we cannot verify that they are in working order. Prospective purchasers are advised to obtain verification from their solicitors and/or surveyors.

Wyndham Road

Approximate Gross Internal Area = 178.7 sq m / 1923 sq ft
Eaves Storage / Reduced Headroom = 5.8 sq m / 62 sq ft
Total = 184.5 sq m / 1985 sq ft



Although every attempt has been made to ensure accuracy, all measurements are approximate.
The floorplan is for illustrative purposes only and not to scale.
© www.perspective.co.uk

Score	Energy rating	Current	Potential
92+	A		
81-91	B		
69-80	C		74 C
55-68	D	57 D	
39-54	E		
21-38	F		
1-20	G		