

RAYMOND AVENUE, EALING

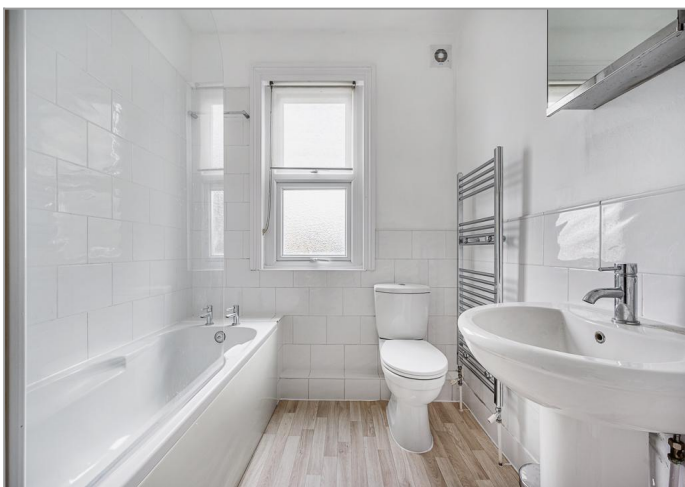


£399,950

Bright & spacious conversion apartment set over the first floor of a conveniently situated, handsome period building. Boasting a recently re-carpeted and redecorated interior that features; a large double bedroom, a generous, separate reception room and modern fitted kitchen. The property further benefits from it's very stylish bathroom, close proximity to shops, stations etc and is vacant and therefore sold with no onward chain...

TUFFIN & WREN

Independent Estate Agents



Further Information

For more details please call us on **020 8566 3366** or send an email to homes@tuffin-wren.co.uk.

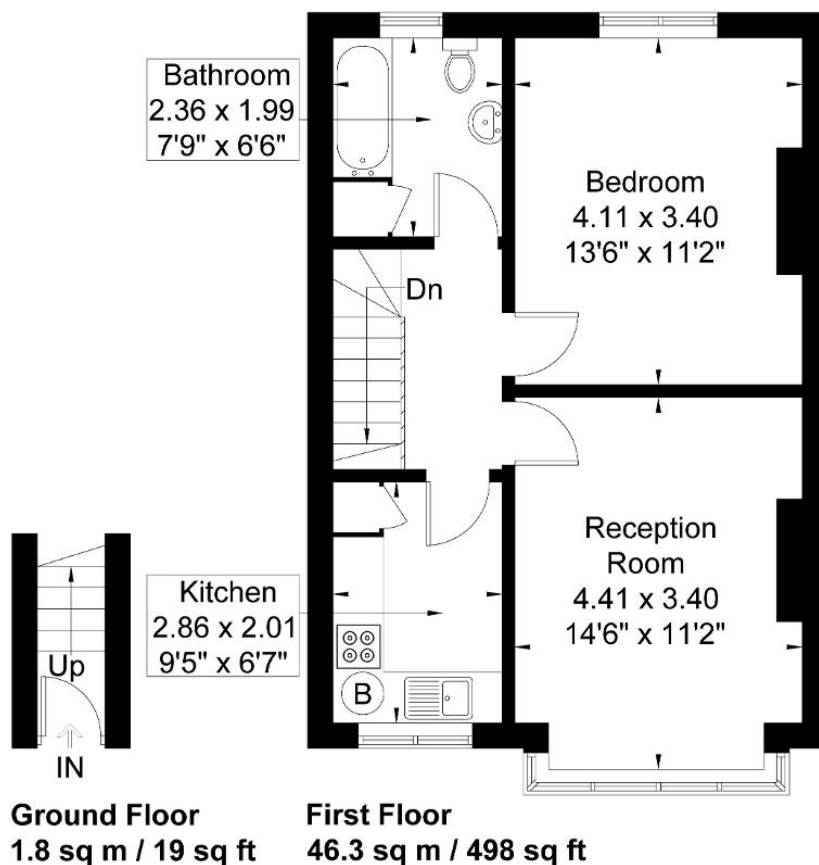
Please note it is not our company policy to test services, heating systems and domestic appliances, therefore we cannot verify that they are in working order. Prospective purchasers are advised to obtain verification from their solicitors and/or surveyors.

TUFFIN & WREN

Independent Estate Agents

Raymond Avenue

Approximate Gross Internal Area = 48.1 sq m / 517 sq ft



Although every attempt has been made to ensure accuracy, all measurements are approximate.
The floorplan is for illustrative purposes only and not to scale.
© www.perspective.co.uk

Score	Energy rating	Current	Potential
92+	A		
81-91	B		
69-80	C	72 C	80 C
55-68	D		
39-54	E		
21-38	F		
1-20	G		